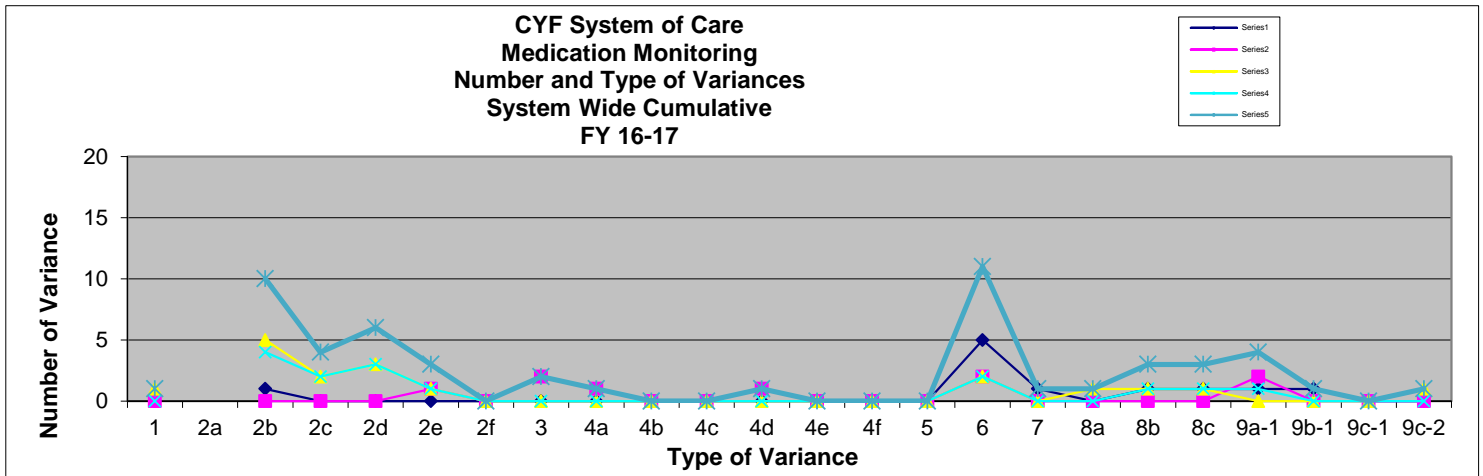
 <p style="text-align: center;">Summary FY 16-17 Medication Monitoring Report Children, Youth And Families (CYF) System of Care</p>		
Of the 64 programs that report on Medication Monitoring 100% submitted a report.		
A total of 5,148 charts were reported open to meds in the fiscal year		
A total of 281 charts were reviewed (5% of open charts).		
A total of 53 variances were reported (1% of possible variances in reviewed charts). The majority of variances are in the areas of labs (2b) and informed consent (6).		
The variances break out as follows (the number to the right represents programs who answered no and thus had a variance):		
1	Medication rationale and dosage is consistent with the community standards.	1
2a	Were labs indicated? NOTE: A "NO" answer to this question is not considered a variance. If this question is answered with "NO", the rest of the questions under 2 (b - f) should be NA.	
2b	Were lab results obtained?	10
2c	Were labs reviewed by Medical Staff?	4
2d	Were lab results present in the chart?	6
2e	Were attempts made to obtain appropriate labs?	3
2f	If treatment continues without labs, is there appropriate rationale to continue or discontinue meds?	0
3	Physical health conditions and treatment are considered when prescribing psychiatric medication.	2
4a	No more than 1 of each class concurrently without a clearly documented justification - Stimulants	1
4b	No more than 1 of each class concurrently without a clearly documented justification - Mood Stabilizers	0
4c	No more than 1 of each class concurrently without a clearly documented justification - Antidepressants	0
4d	No more than 1 of each class concurrently without a clearly documented justification - Antipsychotics	1
4e	No more than 1 of each class concurrently without a clearly documented justification - Anticholinergic Agents	0
5	Were Adverse Drug Reactions and/or Side Effects treated and managed effectively?	0
6	Was informed consent obtained, as evidenced by a signed consent form or ex-parte order?	0
7	Was the diagnosis in concordance with prescribed medication?	11
8a	Did treating M.D. document client's response to medication therapy?	1
8b	Did treating M.D. document the presence/absence of side effects?	1
8c	Did treating M.D. document the extent of client's compliance with the prescribed medication regime and relevant interventions?	3
8d	Did treating M.D. document measures taken to educate client/parent in regard to medication management?	3
9a-1	Age 12 – 17 - Less than 4 psychotropic medications (allows no more than 3) - Does the number of medications prescribed meet the standards?	4
9b-1	Age 6 – 11 – Less than 3 psychotropic medications (allows no more than 2) - Does the number of medications prescribed meet the standards?	1
9c-1	Age 0 – 5 - Less than 2 psychotropic medications (allows 1) - CA Guidelines allows for stimulant, Atomoxetine, Guanfacine, Clonidine or Risperidone (Risperidone for Autistic Spectrum disorders and associated aggression only). Does the prescribing meet the Guideline recommendation?	0
9c-2	Age 0 – 5 - Less than 2 psychotropic medications (allows 1) - Does the number of medications prescribed meet the standards?	1



Summary
FY 16-17 Medication Monitoring Report
Children, Youth And Families (CYF) System of Care

Comparison of Variances in previous Fiscal Years.
Questions 9a - 9c were added in FY 16-17.

		FY 16-17	FY 15-16	FY 14-15	FY 13-14	FY 12-13
1	Medication rationale and dosage is consistent with the community standards.	1	0	2	0	2
2a	Were labs indicated? NOTE: A "NO" answer to this question is not considered a variance. If this question is answered with "NO", the rest of the questions under 2 (b - f) should be NA.					
2b	Were lab results obtained?	10	15	30	45	32
2c	Were labs reviewed by Medical Staff?	4	11	22	25	17
2d	Were lab results present in the chart?	6	13	26	33	20
2e	Were attempts made to obtain appropriate labs?	3	8	19	21	22
2f	If treatment continues without labs, is there appropriate rationale to continue or discontinue meds?	0	2	20	13	8
3	Physical health conditions and treatment are considered when prescribing psychiatric medication.	2	6	2	1	0
4a	No more than 1 of each class concurrently without a clearly documented justification - Stimulants	1	1	3	1	0
4b	No more than 1 of each class concurrently without a clearly documented justification - Mood Stabilizers	0	2	2	0	1
4c	No more than 1 of each class concurrently without a clearly documented justification - Antidepressants	0	1	3	2	1
4d	No more than 1 of each class concurrently without a clearly documented justification - Antipsychotics	1	2	2	1	0
4e	No more than 1 of each class concurrently without a clearly documented justification - Anticholinergic Agents	0	1	3	1	0
5	Were Adverse Drug Reactions and/or Side Effects treated and managed effectively?	0	3	0	0	0
6	Was informed consent obtained, as evidenced by a signed consent form or ex-parte order?	0	11	12	13	49
7	Was the diagnosis in concordance with prescribed medication?	11	3	5	5	3
8a	Did treating M.D. document client's response to medication therapy?	1	2	2	0	2
8b	Did treating M.D. document the presence/absence of side effects?	1	3	2	4	5
8c	Did treating M.D. document the extent of client's compliance with the prescribed medication regime and relevant interventions?	3	2	2	1	4
8d	Did treating M.D. document measures taken to educate client/parent in regard to medication management?	3	4	3	0	3
9a-1	Age 12 – 17 - Less than 4 psychotropic medications (allows no more than 3) - Does the number of medications prescribed meet the standards?	4				
9b-1	Age 6 – 11 – Less than 3 psychotropic medications (allows no more than 2) - Does the number of medications prescribed meet the standards?	1				
9c-1	Age 0 – 5 - Less than 2 psychotropic medications (allows 1) - CA Guidelines allows for stimulant, Atomoxetine, Guanfacine, Clonidine or Risperidone (Risperidone for Autistic Spectrum disorders and associated aggression only).	0				
9c-2	Age 0 – 5 - Less than 2 psychotropic medications (allows 1) - Does the number of medications prescribed meet the standards?	1				



Type of Variance	1	2a	2b	2c	2d	2e	2f	3	4a	4b	4c	4d	4e	4f	5	6	7	8a	8b	8c	9a-1	9b-1	9c-1	9c-2	Total Variances	Total Charts Reviewed
First Quarter.	0		1	0	0	0	0	0	0	0	0	0	0	0	5	1	0	1	1	1	1	1	0	0	11	74
Second Quarter	0		0	0	0	1	0	2	1	0	0	1	0	0	2	0	0	0	0	0	2	0	0	0	9	72
Third Quarter	1		5	2	3	1	0	0	0	0	0	0	0	0	2	0	1	1	1	1	0	0	0	1	18	67
Fourth Quarter	0		4	2	3	1	0	0	0	0	0	0	0	0	2	0	0	1	1	1	1	0	0	0	15	68
Totals	1		10	4	6	3	0	2	1	0	0	1	0	0	11	1	1	3	3	4	4	1	0	1	53	281

VARIANCE QUESTION KEY

- 1. Medication rationale and dosage is consistent with community standards.
- 2a. Were Labs indicated? NOTE: A negative response to this question is not considered a variance.
- 2b. Were lab results obtained?
- 2c. Were labs reviewed by Medical Staff?
- 2d. Were lab results present in chart?
- 2e. Were attempts made to obtain appropriate labs?
- 2f. If treatment continues without labs, is there appropriate rationale to continue or discontinue meds?
- 3. Physical Health conditions and treatment considered when prescribing psychiatric medication.
- 4. No more than 1 of each chemical class concurrently without a clearly documented rationale.
- 4a. No more than 1 of each class concurrently without a clearly documented justification - Stimulants.
- 4b. No more than 1 of each class concurrently without a clearly documented justification - Mood Stabilizer.
- 4c. No more than 1 of each class concurrently without a clearly documented justification - Antidepressants.
- 4d. No more than 1 of each class concurrently without a clearly documented justification - Antipsychotics.
- 4e. No more than 1 of each class concurrently without a clearly documented justification - Anticholinergic agents.
- 5. Adverse Drug Reactions and/or side effects treated and managed effectively.
- 6. Informed consent is evidenced by a signed consent form.
- 7. Diagnosis in concordance with prescribed medication.
- 8a. MD Documentation includes Client Response to medication therapy.
- 8b. MD Documentation includes Presence/absence of side effects.
- 8c. MD Documentation includes Extent of client's adherence with the prescribed medication regimen and relevant interventions.
- 8d. MD Documentation includes Client's degree of knowledge regarding management of his/her medication(s).
- 9a-1 Age 12 – 17 - Less than 4 psychotropic medications (allows no more than 3) - Does the number of medications prescribed meet the standards?
- 9b-1 Age 6 – 11 – Less than 3 psychotropic medications (allows no more than 2) - Does the number of medications prescribed meet the standards?
- 9c-1 Age 0 – 5 - Less than 2 psychotropic medications (allows 1) - CA Guidelines allows for stimulant, Atomoxetine, Guanfacine, Clonidine or Risperidone (Risperidone for Autistic Spectrum disorders and associated aggression only). Does the prescribing meet the Guideline recommendation?
- 9c-2 Age 0 – 5 - Less than 2 psychotropic medications (allows 1) - Does the number of medications prescribed meet the standards?

**CYF Services Providers
Medication Monitoring
Reported Variances by Program
Comparison by Fiscal Year**

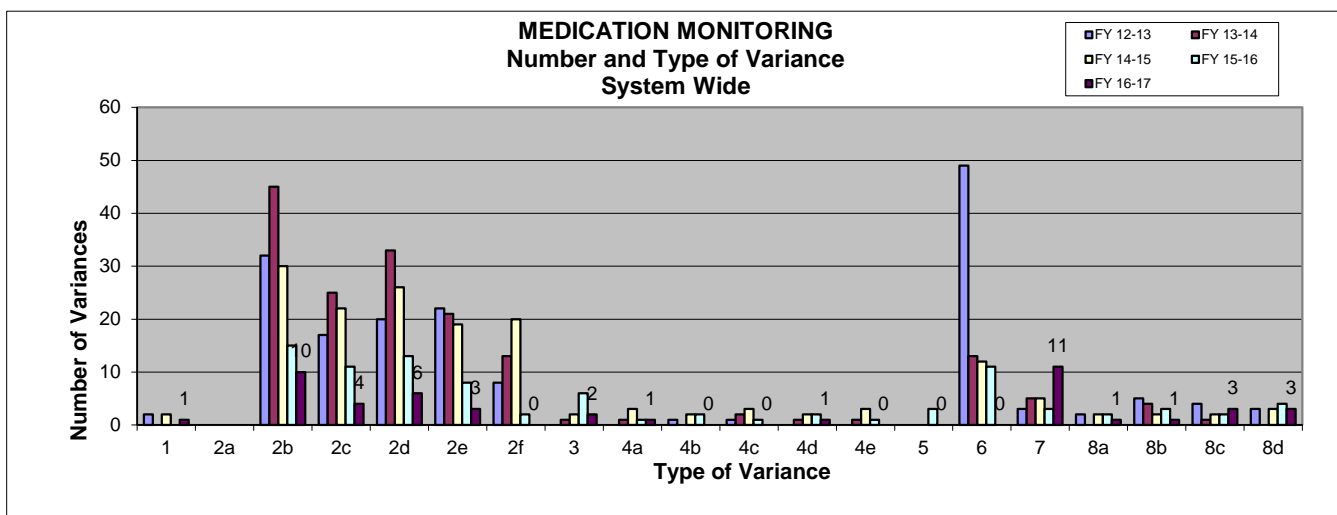
	Number of variances by question																				# of Charts Reviewed	# of Variances				
	1	2a	2b	2c	2d	2e	2f	3	4a	4b	4c	4d	4e	5	6	7	8a	8b	8c	8d			9a-1	9b-1	9c-1	9c-2
FY 12-13	2		32	17	20	22	8	0	0	1	1	0	0	0	49	3	2	5	4	3					569	169
% of Total Variances	0%		6%	3%	4%	4%	1%	0%	0%	0%	0%	0%	0%	0%	9%	1%	0%	1%	1%	1%						
FY 13-14	0		45	25	33	21	13	1	1	0	2	1	1	0	13	5	0	4	1	0					491	166
% of Total Variances	0%		9%	5%	7%	4%	3%	0%	0%	0%	0%	0%	0%	0%	3%	1%	0%	1%	0%	0%						
FY 14-15	2		30	22	26	19	20	2	3	2	3	2	3	0	12	5	2	2	2	3					437	160
% of Total Variances	0%		7%	5%	6%	4%	5%	0%	1%	0%	1%	0%	1%	0%	3%	1%	0%	0%	0%	1%						
FY 15-16	0		15	11	13	8	2	6	1	2	1	2	1	3	11	3	2	3	2	4					313	90
% of Total Variances	0%		5%	4%	4%	3%	1%	2%	0%	1%	0%	1%	0%	1%	4%	1%	1%	1%	1%	1%						
FY 16-17	1		10	4	6	3	0	2	1	0	0	1	0	0	0	11	1	1	3	3	4	1	0	1	281	53
% of Total Variances	2%		19%	8%	11%	6%	0%	4%	2%	0%	0%	2%	0%	0%	0%	21%	2%	2%	6%	6%	8%	2%	0%	2%		

Note: Criterias 9a - 9c were added in FY 16-17.

Note: Criteria 2 was expanded on the review tool in FY 12-13, so a question to question comparison to former fiscal years is not possible.

Note: Criteria 2a was Criteria 2 in fiscal years prior to FY 12-13. Criterias 2b through 2f were not included on the review tool in fiscal years previous to FY 12-13.

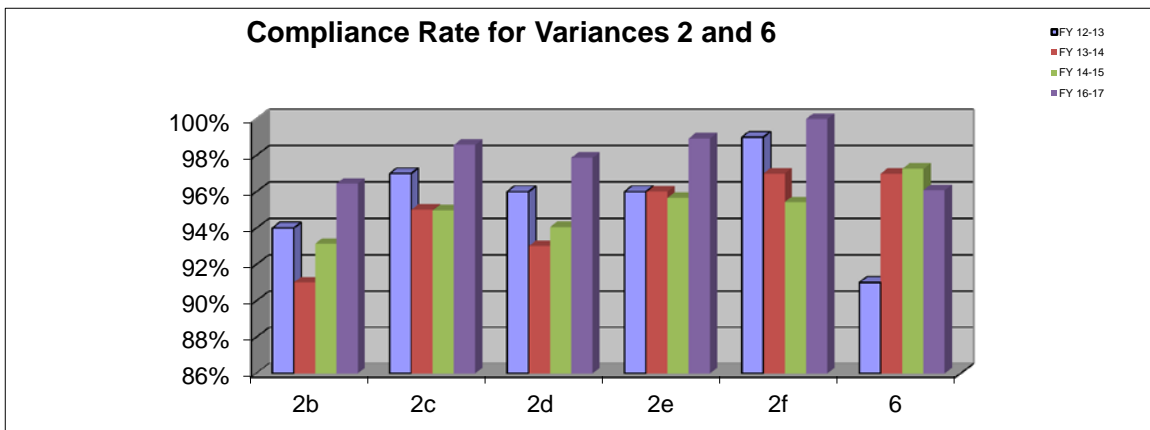
Note: A negative answer to criteria 2a is not considered a variance starting in FY 12-13



**CHILDREN'S MENTAL HEALTH SERVICES PROVIDER
MEDICATION MONITORING**

Compliance Analysis - Variances 2 (Labs) and 6 (Informed Consent)

	Charts Reviewed	# Variances						Compliance Rate					
		2b	2c	2d	2e	2f	6	2b	2c	2d	2e	2f	6
FY 12-13	569	32	17	20	22	8	49	94%	97%	96%	96%	99%	91%
FY 13-14	491	45	25	33	21	13	13	91%	95%	93%	96%	97%	97%
FY 14-15	437	30	22	26	19	20	12	93%	95%	94%	96%	95%	97%
FY 15-16	313	15	11	13	8	2	11	95%	96%	96%	97%	99%	96%
FY 16-17	281	10	4	6	3	0	11	96%	99%	98%	99%	100%	96%



2a. Were Labs indicated? NOTE: A negative response to this question is not considered a variance.

2b. Were lab results obtained

2c. Were labs reviewed by Medical Staff

2d. Were lab results present in chart

2e. Were attempts made to obtain appropriate labs

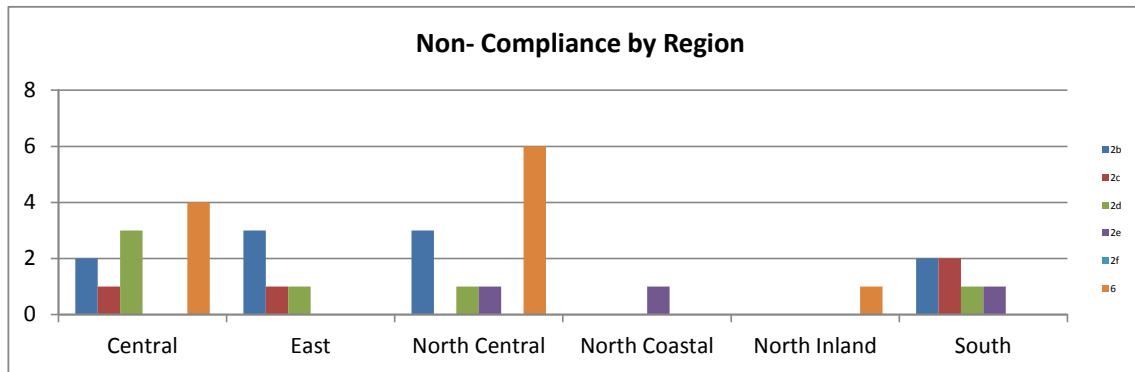
2f. If treatment continues without labs, is there appropriate rationale to continue or discontinue meds

6. Informed consent is evidenced by a signed consent form

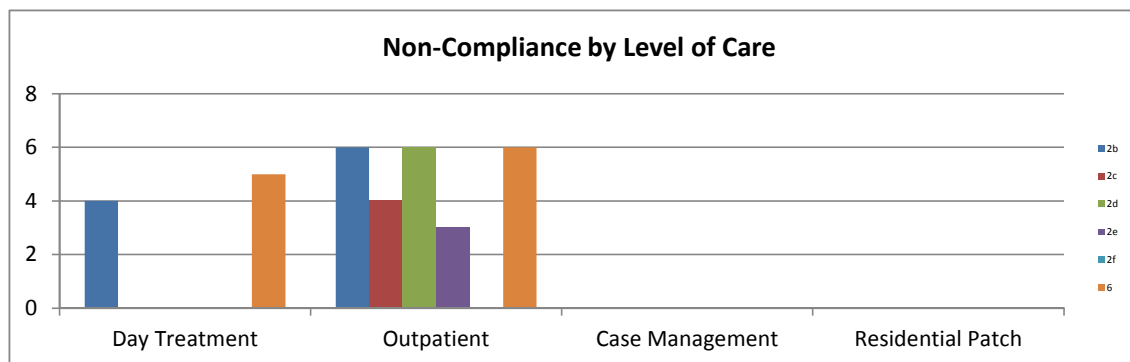
**CHILDREN'S MENTAL HEALTH SERVICES PROVIDERS
MEDICATION MONITORING**

Compliance Analysis (Variance 2 - Labs and Variance 6 - Informed Consent)

By Region		2b	2c	2d	2e	2f	6
Central		2	1	3	0	0	4
East		3	1	1	0	0	0
North Central		3	0	1	1	0	6
North Coastal		0	0	0	1	0	0
North Inland		0	0	0	0	0	1
South		2	2	1	1	0	0
Total - Variance 2		23		Total Variance 6			11



By Level of Care		2b	2c	2d	2e	2f	6
Day Treatment		4	0	0	0	0	5
Outpatient		6	4	6	3	0	6
Case Management		0	0	0	0	0	0
Residential Patch		0	0	0	0	0	0
Total - Variance 2		23		Total - Variance 6			11



Note: The numbers reported here represent the instances of non-compliance as reported by the providers.